

# INSTALLATION INSTRUCTIONS

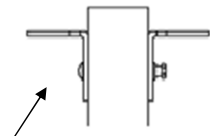


**TangoRail TR500**  
**Post Type: Box Section**  
**Fence Heights: 1.0m, 1.2m, 1.5m, 1.8m**

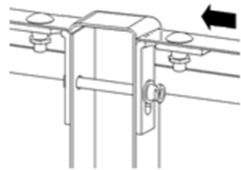


Panel Height (m)	all dimensions in mm										Verts per panel
	A *	B	C	D	E	F	G	H	J	K	
1.0m	2805mm Nominal c/c	950	78	103		75		1500	500		26
1.2m		1150						1750	550		
1.5m		1450						2000	500		
1.8m		1750						2400	600		

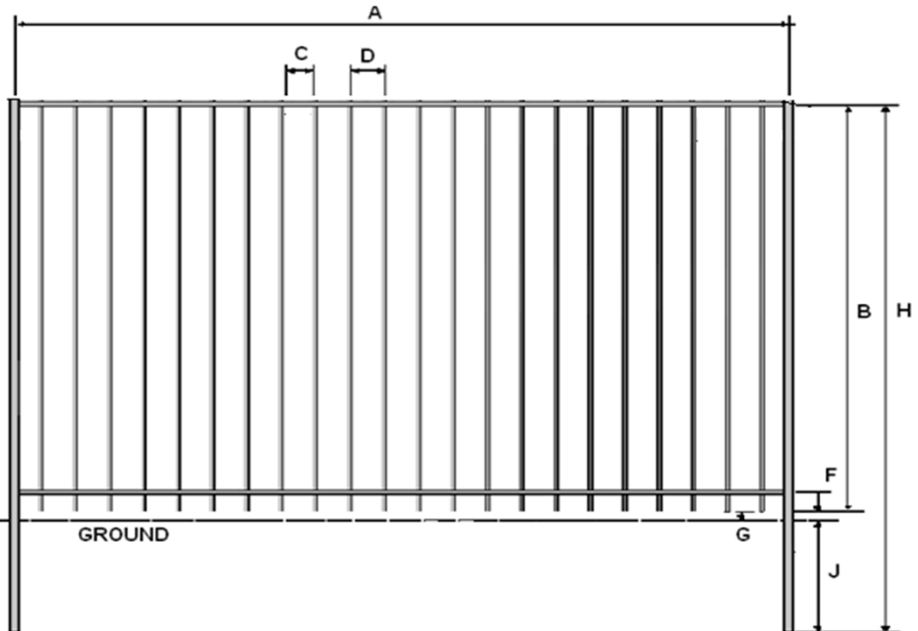
\* Dimension A - Raking detail  
 Max rake of a standard panel = 800mm  
 Adjustment of post centres will be required to suit any intermediary rakes.



To fix cleat:  
 Attach to either side of the post using a through M8 bolt.



SHS post/panel assembly

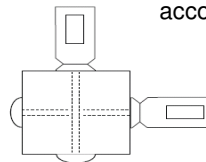


To fix panel:  
 Offer the rail onto the cleat and insert bolt.  
 Push as far as possible towards the post face.

Make any adjustments to fence before snapping off

To install a corner:  
 Use a specific corner post with extra holes & bolts to secure cleats at 90deg

Corner fixing



Make up panels are to be cut and drilled on site from standard panels. Any cut or damaged surfaces need to be repaired accordingly.

The information contained in this drawing is the sole property of Heras UK Fencing Systems. Any reproduction in part or whole without the written permission on Heras UK is prohibited.